

A Guide of beautiful Minoh

Minoh Walking Map

Full of beautiful nature, you won't believe that central Osaka is only 30 minutes away. Listen to the sound of the river and walk beneath the relaxing maple trees and cedars, for it will leave you with a smile.



勝尾寺 (Katsuo-ji Temple)

With 80,000 square meters of land, Katsuo-ji is famous for beautiful sceneries of cherry blossoms, rhododendron, hydrangea, and maple trees. When the 6th head of the temple cured a disease of the Seiwa Emperor, it was given the name "勝王寺" meaning a temple that beats Kings, but the temple said that name is too strong and named it "勝尾寺" then on, the temple became famous as the "Temple of Winner's Luck" and has numerous Daruma dolls that already have fulfilled its prayer.

☎072-721-7010
●Take a taxi from Minoh Station or a bus from Senri-chuo Station

1 箕面大滝 (Minoh Waterfall)

One of the main attractions in Minoh is a famous 33-meter waterfall that has been selected as one of Japan's top 100 Waterfalls. It has breathtaking views and sounds that will make you forget time. It is so full of spiritual power that even Oda Nobunaga and Matsuo Bashou came here. It is popular in the summer time as it is much cooler and also as it is lit up during the night.



Sightseeing carriage used to run on the trail!

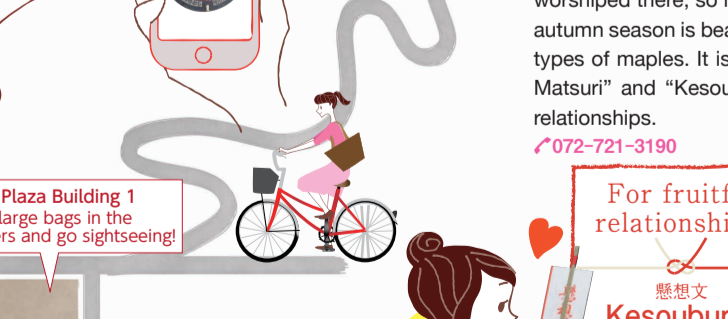
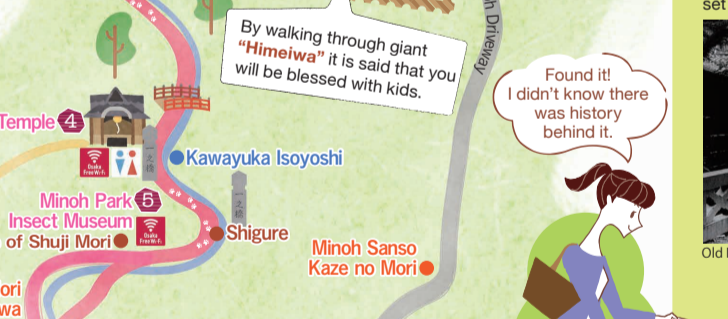
The sightseeing carriage used to run till 1983. Around the deep hill of "Shige no Koba", a horse would spark the road with its hooves with a carriage full and a driver whipping. You can still see the remains of the horse's drinking fountain.

Horse's drinking fountain

"Sightseeing carriage" that used to run on the trail.

2 唐人戻岩 (Toujin Modoriwa)

There is an old story about a person from Tou who came to see the Minoh Waterfall, but turned back when he saw this huge boulder. Evil spirits will be gone if you touch this rock!



Giving food to monkeys are prohibited

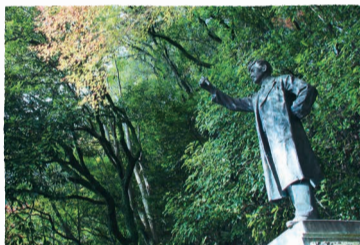
Don't give food to monkeys. Please don't give food to monkeys as we are trying to let them back into the wild. 10,000 yen fine.

No-Smoking in Public

Inside the Minoh Park, Takimichi, and near Minoh Station are No-Smoking areas. Put out your cigarettes and breathe in the beautiful, clean air!

3 野口英世像 (Statue of Noguchi Hideyo)

Noguchi Hideyo came back from the US in 1915 and visited Minoh with his mother. Everybody was touched when he took care of her at the welcoming party in "Koto no ya". People at the "Koto no ya" donated some of their wealth to build his statue where it could look down their restaurant. Go up the stairs from the trails and see Dr. Noguchi!



4 瀧安寺 (Ryuanji Temple)

It was built near the waterfall by "En no gyouja" around 650 and was named "Minoh Temple" first. Later was renamed "Ryuanji". It is said that Ryuanji's Benzaiten is the first and the oldest of all the temples.

Monks from all over the country come and train here.

☎072-721-3003



Birth place of the lottery!

The lottery started from Ryuanji!

"Fortune Lottery", which started over 400 years ago, is the beginning of the lottery! The "Good Luck Charm" you receive when you win is said to have good luck for health, safety, and business. Come by October 10th for the annual lottery presented as it was back then.

5 箕面公園昆虫館 (Minoh Park Insect Museum)

The city of Minoh is one of the "Three Treasure Houses of Insects" along with Takao in Tokyo and Kifune in Kyoto. Osamu Tezuka often visited Minoh to collect insects. This museum not only contains information about insects, it showcases those found in Minoh forest.

When you visit Houchouen where butterflies can be found year-around, one may even land on your shoulder!

☎072-721-7967



Minoh Kawayuka

From April to October, you can enjoy a party near the river at Kawayuka. Between the Meiji and the Showa eras, many shops opened near the Minoh River, and they were very popular. However, floods washed them away, and they disappeared for a while. With many voices asking for Kawayuka to come back, it opened again in 2010.



Information Minoh Transportation Travel Information Center

At the information center in front of Minoh station, the staff introduce you to popular, recommended spots not well known. It is best to stop by before your adventure in Minoh!

Municipal Daiichi Parking Lot
Municipal Bicycle Parking Lot (paid parking)
Bicycle rentals and rental lockers are available - perfect for sightseeing!

For fruitful relationships!

懸想文 Kesoubumi

Kesoubumi is a good luck charm for relationships that are said to be successful since the Edo Era. They can be bought at Saikouji Temple.



Stay at a
hot spring Hotel
for a
wonderful
time

Just a walk outside is not enough!
How about a hot spring and resting your tired body?
Stay a night with great food for a blissful moment.

- Hot spring available with a meal
- Hot spring available with a stay
- Day trip hot spring available



Oedo Akafuji Bath

At the top floor "Tenkoo Hot Spring" you can see the Osaka plains



Panorama view from the terrace

Ooedo Onsen Monogatari
Minoh Kanko Hotel
Minoh Onsen Spa Garden

Minoh Onsen has one of the best hot springs in the Kansai area. "Tenkoo Hot Spring" at the top floor is available for guests staying at the hotel, with a great view of the Osaka plains. Day trip hot spring with stone sauna is available at Minoh Onsen Spa Garden.

☎0570-041266 ●Onsen-cho 1-1
●3-minute walk from Minoh Station

Hot spring data
Quality Hydrogen carbonate spring
Effect Nervous system, nerve pain, chronic rheumatism, fatigue recovery, and smooth skin

Free admission
Natural hot spring Yuzuru Footbath

Available for everyone, with free admission, located on Takimichi that goes to the Minoh Waterfall. Use it after walking around Takimichi and rest your tired legs.



Minoh Sanso
Kaze no Mori

Relaxing inn with nature and a beautiful panorama view of the Osaka plains. Take a bath at their calcium carbonate hot spring and then enjoy their several course using the best season ingredients.

☎072-722-2191 ●Minoh 2-14-71
●10 minutes with a free shuttle bus from Minoh Station

Hot spring data
Quality Artificial calcium carbonate hot spring
Effect Bad blood circulation, rash, chilblains, bruises, fatigue recovery, stiff shoulder, back pain, etc.



"Komorebi no Yu", large bath using minerals that has far infrared rays



View of the Osaka plains from the lobby



More than satisfying meal using the ingredients at their best season!



Enjoy the private outdoor hot spring by reservation



"Koyoburo" artificial calcium carbonate hot spring

Meiji no Mori Minoh Otowa Sanso

Experience the lovely four-seasons scenery at the long-standing, traditional house. Hot spring and stone sauna are available for those staying or lunch guests. You can drink Minoh Beer at the footbath where you can view the Takimichi.

☎072-721-3005
●Minoh Park 1-3
●8-minute walk from Minoh Station

Hot spring data
Quality Artificial calcium carbonate hot spring
Effect Bad blood circulation, rash, chilblains, bruises, fatigue recovery, stiff shoulder, back pain, etc.



Hear the sound of the river and trees that you won't be able to when you are in an urban area

Delicious,
Cute
things

Available at the shops on Takimichi

World Champion Minoh Beer



Minoh Beer

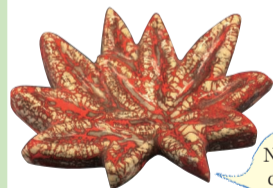
Won numerous awards at International Beer Competition. Every beer is 100% malt, unfiltered, and unheated, handmade inside a factory in Minoh City. The flavorful smell and deep taste will leave you wanting more.

Good for souvenir!



Minoh Hand Towel

Minoh characters, Takinomichi Yuzuru and Momijinu are designed on it. Color and designs change every year so it is always good for a souvenir or a present!



Never seen a color so red!

Minoh Yaki

Beautiful piece of pottery that reminisces the red maple trees in Minoh Mountains. This is a great choice of gift for pottery-lovers or your love ones.



Don't miss Takinomichi Yuzuru Goods!

Raised from seed citrus

Made in the northern part of Minoh, Todoromi, where clean air and water make a perfect environment for Yuzu, the citrus raised from seeds. They are big and aromatic, so rare that they are used in Ryoteis.



Minoh Sweets "LITTLE TREASURE"

Sweet bean paste mixed with egg yolk, with the rich fragrance of wild yuzu and fair trade white chocolate wrapped with gyuhi. Sold at Franc et élégant YUZUYA, Hashimoto Tei

Yuzu skincare products

A range of skincare products made from organic (naturally grown) yuzu and fulvic acid, that brings out mature beauty. Sold at Yuragi Style and Minoh Sansou Kazenomori

Premium Yuzu Marmalade

Handmade marmalade using Yuzu, from Todoromi.



Process of traditional snack "Momiji no Tempura"

Aromatic and a bit sweet fried snack
Men and women of all ages can enjoy and is great for gifts!

- 1 Harvest**
Hand-picked one by one, that grew during the season from mid November to beginning of December. This type of maple is called "Ichigyouji Kaede".
- 2 Salting and Desalting**
After harvest, they are carefully washed and then soon preserved with salt for more than a year, then desalted by keeping it inside water.
- 3 Fry**
Cautiously fried for 20 minutes, then dipped in flour, water, sugar, and sesame, though each shop has their own secret formula.
- 4 Done!**



Where are the monkeys?

The monkeys in Minoh are wild animals designated as a special treasure, so no one is caring for them. They are free in the mountains, so they cannot be seen everyday.

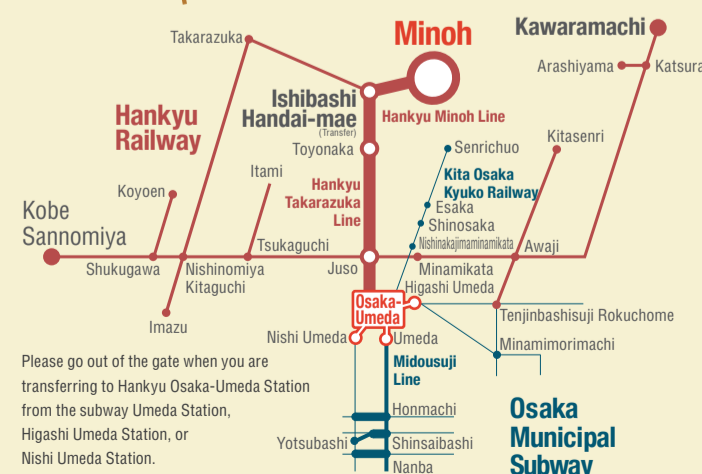
Feeding the wild monkeys is illegal by the Minoh City Laws

- Don't feed!
- Don't show food!
- Don't get close!



Please respect and cooperate with rules.

Only 30 minutes from
Osaka-Umeda Station



Please go out of the gate when you are transferring to Hankyu Osaka-Umeda Station from the subway Umeda Station, Higashi Umeda Station, or Nishi Umeda Station.

Published: Minoh City Office Minoh Sales Division

〒562-0003 Minoh City Nishishouji 4-6-1

072-723-2121 (Rep.)

https://www.city.minoh.lg.jp/

Published March 2022